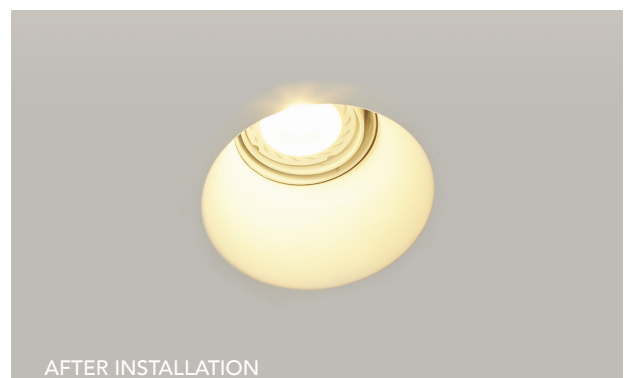
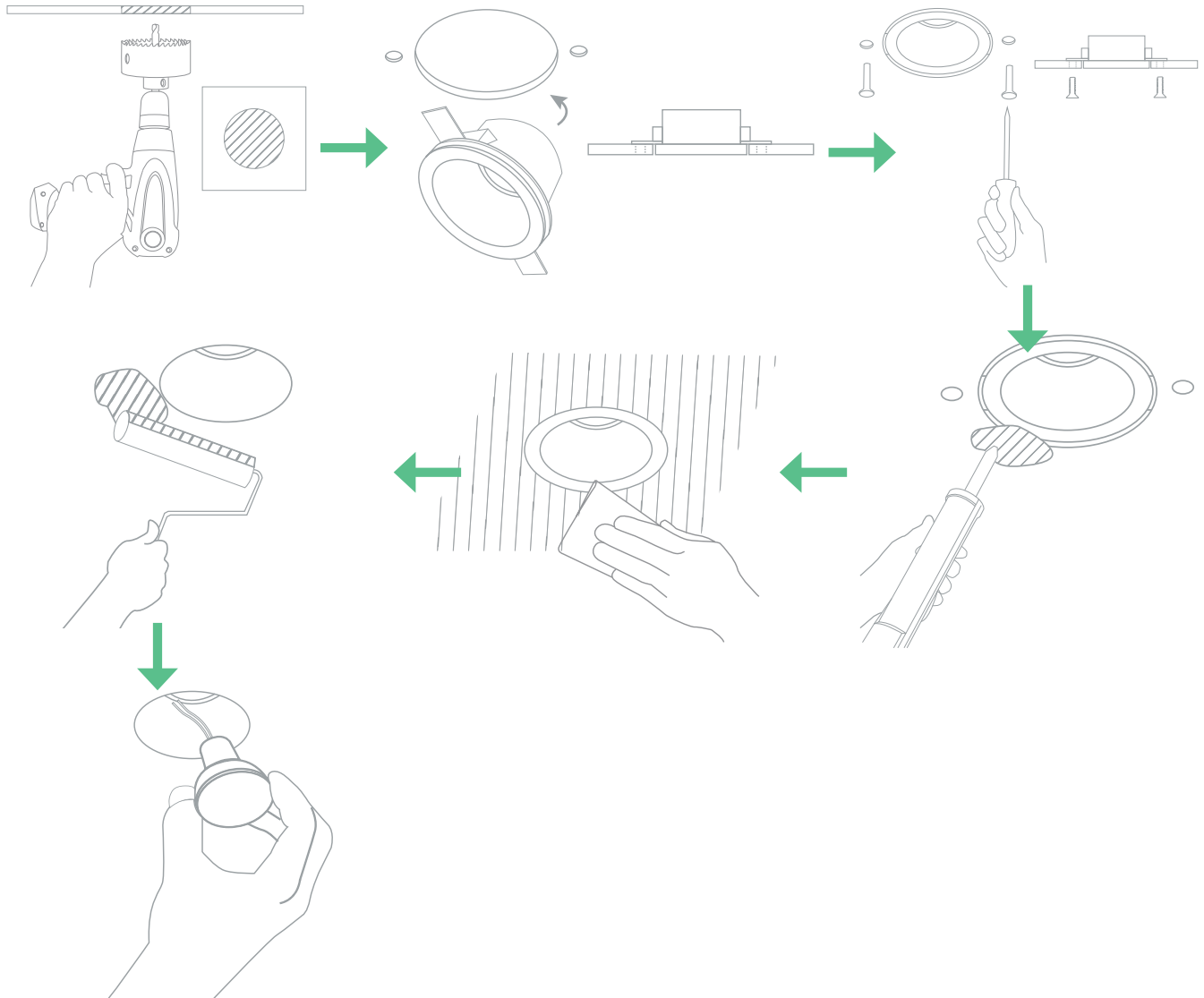


# Choose solid plaster trimless lighting...

where you have an already plastered wall or ceiling, and you're not planning to skim the surface again.

After the product installed it is a decorators job to infill the gap with a flexible filler / caulk, sand to a smooth finish and paint the surface including the interior of the fitting.

## installing solid plaster trimless lighting



# Choose metal trimless lighting...

where you are installing into a wall or ceiling that has yet to be skimmed, or will be reskimmed.

After the metal frame is installed in the wall or ceiling the plasterer skims the surface with a 3mm layer of plaster skim. The frames have a 3mm lip for the plasterer to skim up to.

## installing metal frame trimless lighting

